

Infor ERP SyteLine Product Overview & Direction



**Dave Mueller, Director, Product Management
February 2009**



ERP SL Disclaimer

This document reflects the direction Infor may take with regard to the specific ERP product(s) described in this document, all of which is subject to change by Infor in its sole discretion, with or without notice to you of that ERP direction change. This document is not an ERP evolution commitment to you in any way and you should not rely on this document or any of its content in making any decision. Infor is not committing to develop ERP improvements or deliver anything described herein.



ERP SL Content

- Infor Product Strategy
- Infor ERP SyteLine Business Update
- Infor ERP SyteLine Product Plan
- Infor ERP SyteLine Reference Program
- Questions





Infor ERP SL Product Strategy



Dual Approach to ERP Software Delivery

Application-centric approach



Upgrade whole system

SOA-centric approach



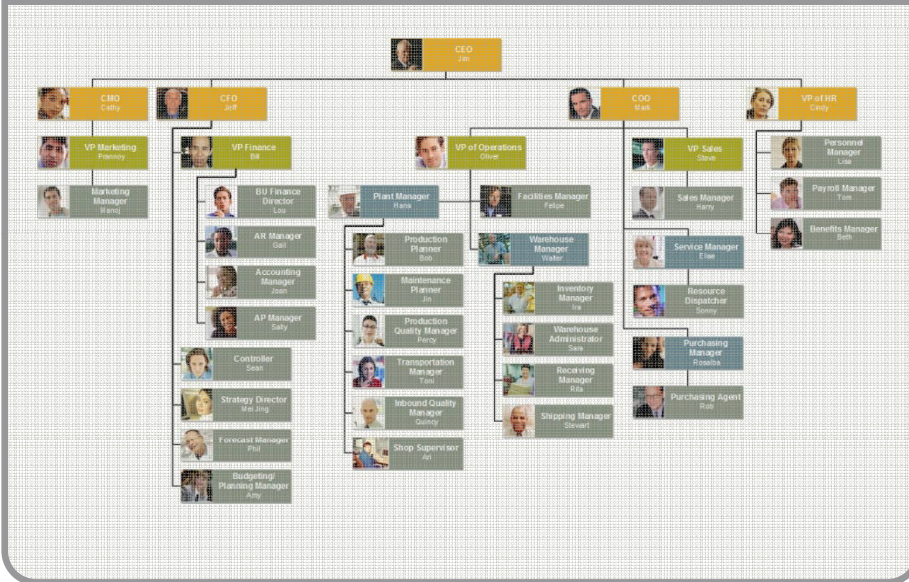
Add/upgrade component

“ Transition to component-centric delivery helps customers control risk, minimize cost and adopt new features faster in the ERP system ”

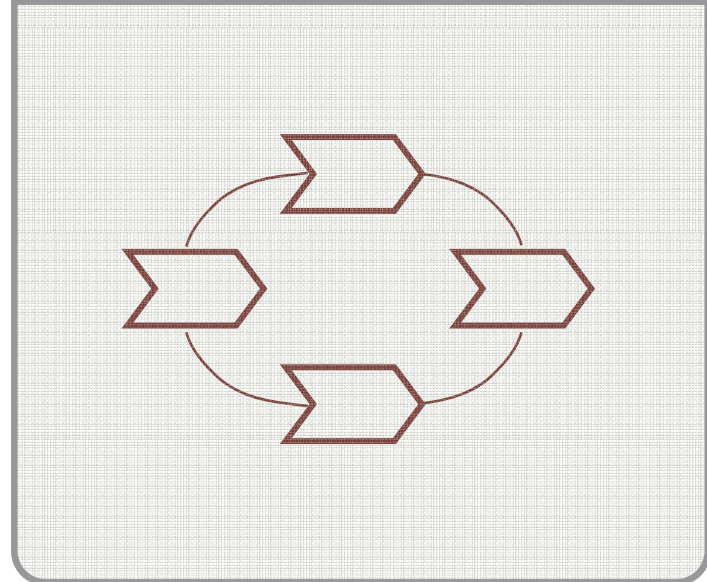


Key Elements of Infor Strategic Blueprint in the ERP SL

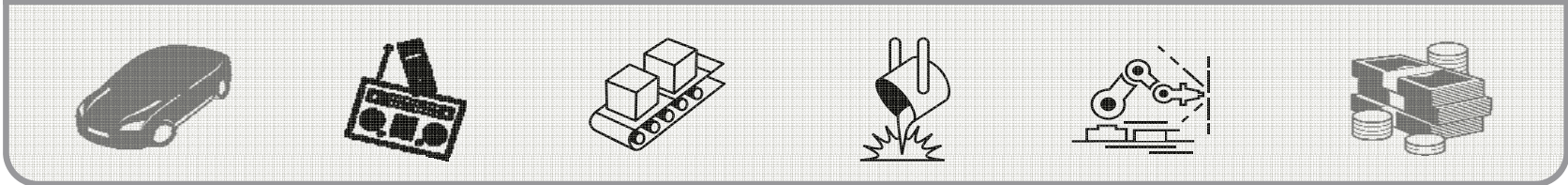
People



Business Processes

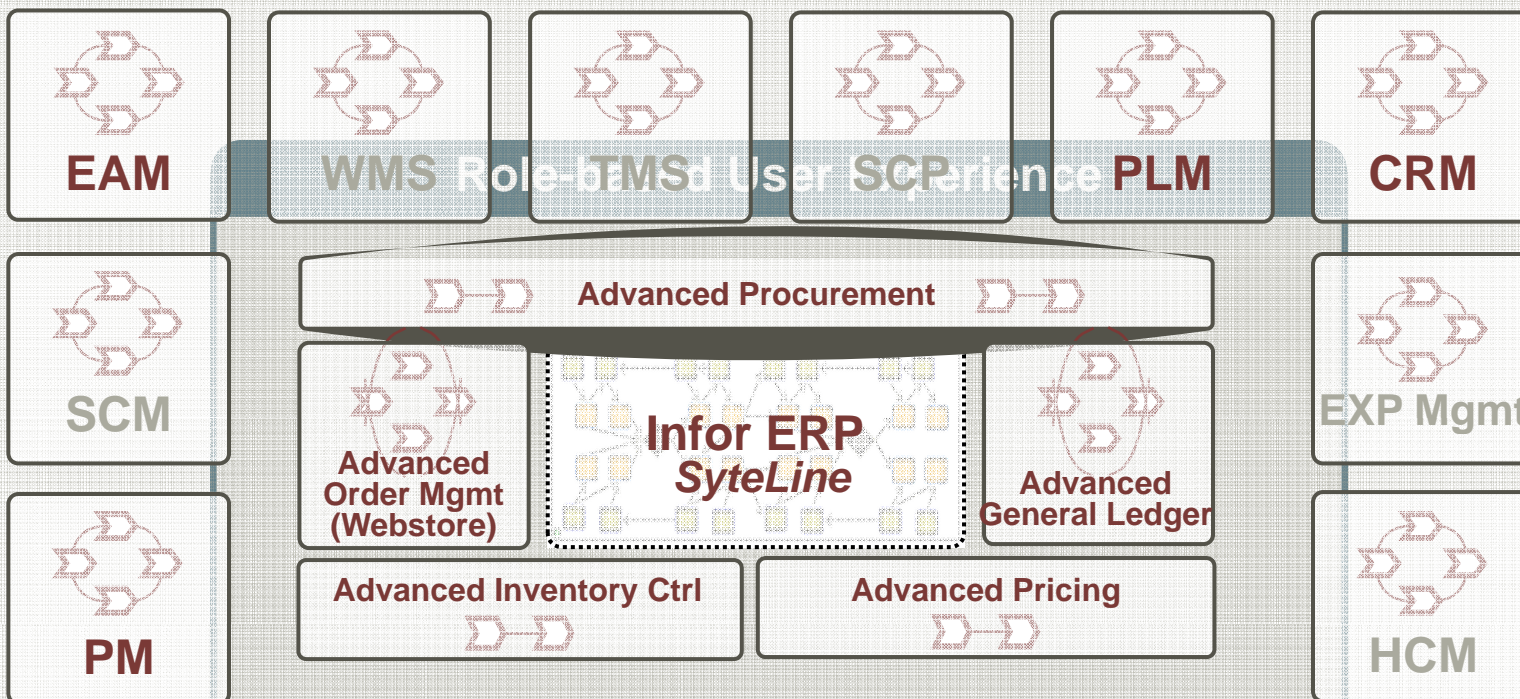


Industries



ERP Syteline: Standardized Interoperability to Easily Extend Business Capabilities

Infor MyDay / Infor Decisions



Infor Open SOA Framework

Dynamic Enterprise Management





Infor ERP SyteLine Business Update

Infor ERP SyteLine

- 2008 Released
 - Infor ERP SyteLine 7.05.20 Service Pack
 - Infor ERP SyteLine 8.00.00 / CRM BE Integration
 - Infor ERP SyteLine 8.00.00 Country Packs
 - CN, DE, JP, MX, TH, FR
 - Infor ERP SyteLine 8.00.10 Service Pack
 - Infor ERP SyteLine 6.03.00 Feature Pack 3
 - Infor ERP EDI Solution & Secure File Transfer
 - Infor ERP Document Management Solution
 - Infor ERP SyteLine 8.00.11 Framework Service Pack
 - Infor ERP SyteLine 8.00.10 SaaS
 - Infor ERP SyteLine 8.00.10 / SunSystems Integration
- Planned
 - Infor ERP SyteLine 8.01.00 Feature Pack
 - Infor ERP SyteLine 8.01.00 / PM 10 & PM FR
 - Infor ERP SyteLine 8.01.00 / MyDay



Customer Choice to Buy, Deploy & Execute ERP SyteLine

- On-Premises
 - Traditional Perpetual License ERP run by customer on site
- SaaS Subscription
 - Customer subscription to ERP SyteLine on demand usage
- SaaS Hosted License
 - Traditional software licensing ERP plus SaaS Hosting from Infor
- Dedicated Hosting (aka ASP)
 - Custom single instance hosting services per individual customer
- Application Managed Services (AMS)
 - Range of outsourcing services provided by Infor



What to look for in a ERP SaaS provider

- System Monitoring
- Security Best Practices
- ERP Help Desk Support
- Change Management
- Data Recovery
- High Availability
- ERP Data Center Redundancy
- Network Redundancy
- Disaster Recovery
- SAS 70 Type II Audited





Infor ERP SyteLine Product Plan

ERP SL 8.00

Extended
Value

Technology

Business
Operations

Builder

Additional
Value

The logo for Infor ERP SyteLine 8.00, featuring the word "Genesis" in a bold, sans-serif font. The background of the logo is a grayscale image of a document with the words "Project Outline" and "Timeline" visible, overlaid with a circular graphic element.

Genesis

Infor ERP SyteLine 8.00 – Released 10/29/2007

- Infor ERP SyteLine 8.00 Product Suite
- Technology Framework Enhancements
- Core Functional Enhancements
- ERP Customer Enhancement Requests
- Multi site Framework Enhancements
- International – CN, DE, FR, TH, MX, JP
- Solution Partner Products



ERP SL 8.00

Extended
Value

Technology

Business
Operations

Builder

Additional
Value



- **Infor ERP SyteLine 8.00 Extended Value**
 - Enterprise Asset Management (EAM)
 - SupplyWEB
 - PLM 8
 - CRM Business Edition
 - BuyDesign Configurator



ERPSL 8.00

Extended
Value

Technology

Business
Operations

Builder

Additional
Value



Infor ERP SyteLine 8.00 – Technology

- New single click client install
- Event system
- ERP Virtual IDO basis
- Security enhancements
- Concurrent and named by intranet
- ERP Crystal XI
- SQL 2005 requirement
- Vista compliance
- ERP New UI Architecture
- New look and feel
- ERP Outlook & excel integration
- Multi site framework



ERP SL 8.00

Extended
Value

Technology

Business
Operations

Builder

Additional
Value



Infor ERP SyteLine 8.00 – Business Operations

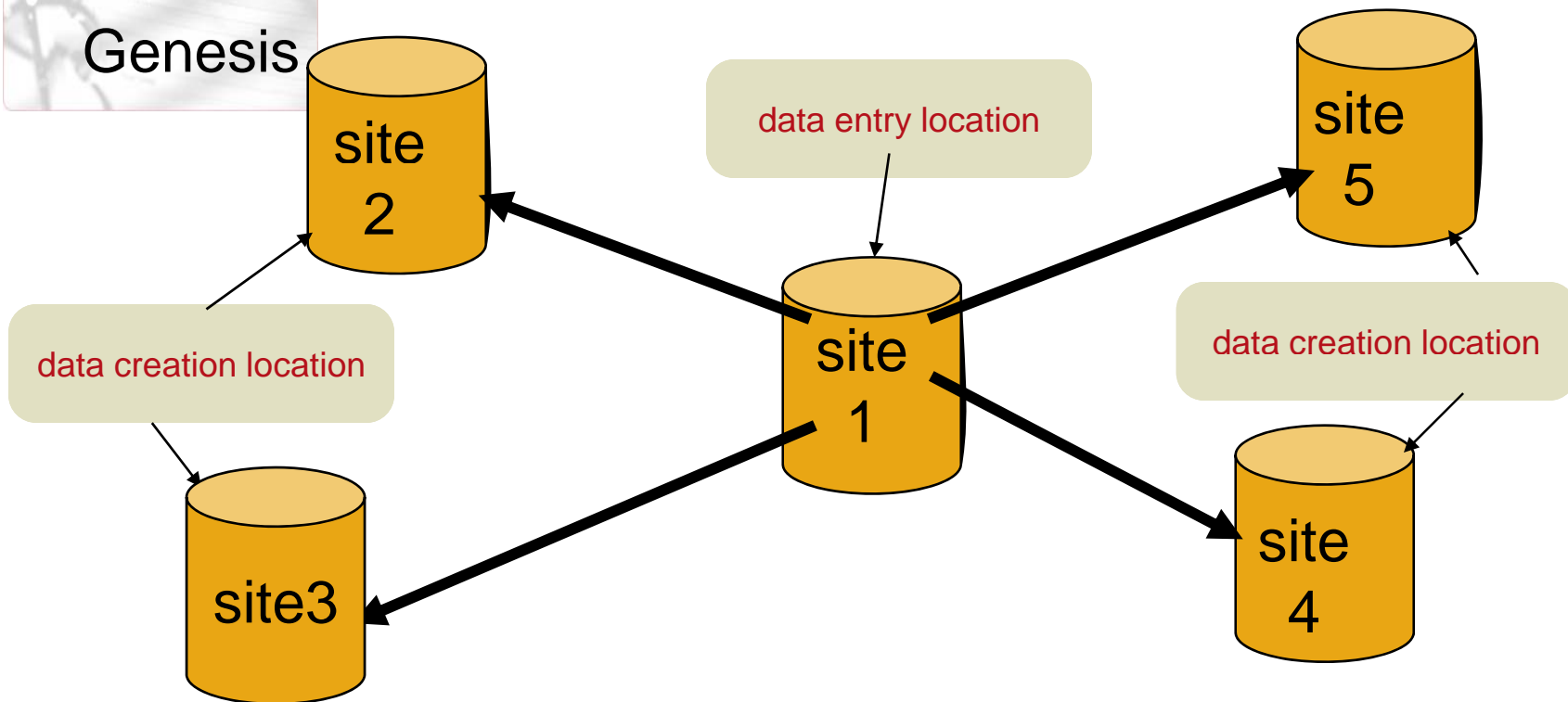
- Over 100 customer enhancements
- Manufacturing
 - Kitting
 - Rework orders
- ERP Accounting
 - Voucher builder
 - Journal builder
- Purchasing
 - PO tolerance management
 - PO builder
- Sales
 - Customer ship – to visible





Genesis

What is the “builder” concept in ERP system?



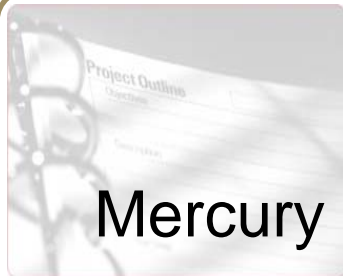
Enter data in one location to be created in a different location



Mercury

Building for the Future - Infor ERP SyteLine 8.01.00 (Feature pack) – Planned for March 2009

- **Upgrade Conversion Levels**
- *The following versions are “jump” points that enable conversion to ERP SL 8.01 or paths in which the conversion code is supported:*
 - *ERP SL5.02 (Latest SP Level)*
 - *ERP SL6.02 (Latest SP Level)*
 - *ERP SL6.03 (Latest SP Level)*
 - *ERP SL7.03 (Latest SP Level)*
 - *ERP SL7.04 (Latest SP Level)*
 - *ERP SL7.05 (Latest SP Level)*
 - *ERPSL8.00 (Latest SP Level)*



- **Enabling ERP SyteLine for Evolve**

- General BOD Management & Analysis
- MyDay
- ERP Evolve Components
- PM 10 & PM FR
- Infor Decisions
- Infor User Experience – Clear UX

ERP SL 8.01

Extended
Value

Technology

Business
Operations

Builder

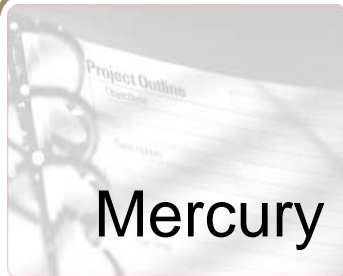
MyDay



Mercury

- **Technology of ERP SyteLine**
 - Windows Server 2008
 - VM Ware
 - MS project 2007
 - Stubs for Partner Solutions



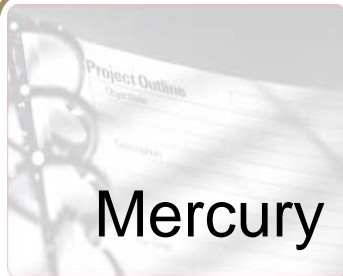


■ Technology of ERP SyteLine

- Graphical Editor for App Event System
- ERP Event System Parameter Editor Forms
- Streamline the Framework SOA BUS Interface
- ERP Support Double-byte Data Report Parameters
- ERP App Event System Inbox Custom Forms
- ERP Report Autoview Option; New Taskman Config Opt
- ERP Login Dialog Enables Workstation Login
- Form Control for Site Default Forms
- Visual Studio 2008 for Script Editing



- **Enhancement of new ERP SyteLine 8.00 Features**
 - Event System
 - Manual Voucher Builder
 - ERP Purchase Order Builder Planning Detail
 - Voucher Builder Total Tax Amount
 - ERP Customer/Vendor/Item Visible Functions
 - CRM Features
 - ERP SL-CRM Module for CRM BE
 - Available to Ship & To Be Shipped Value



■ APS in ERP Syteline

- Planning Parameter Reorganization
- APS Planning Detail Form
- ERP Start Date to Recommend Plan
- Tiered Selection Rule in Scheduler
- ERP Resource Bottleneck View
- Save Push Pass Critical Path
- ERP Option for M, F, B for Shift Schedule
- Display Time Fence
- Shortage Report

ERP SL 8.01

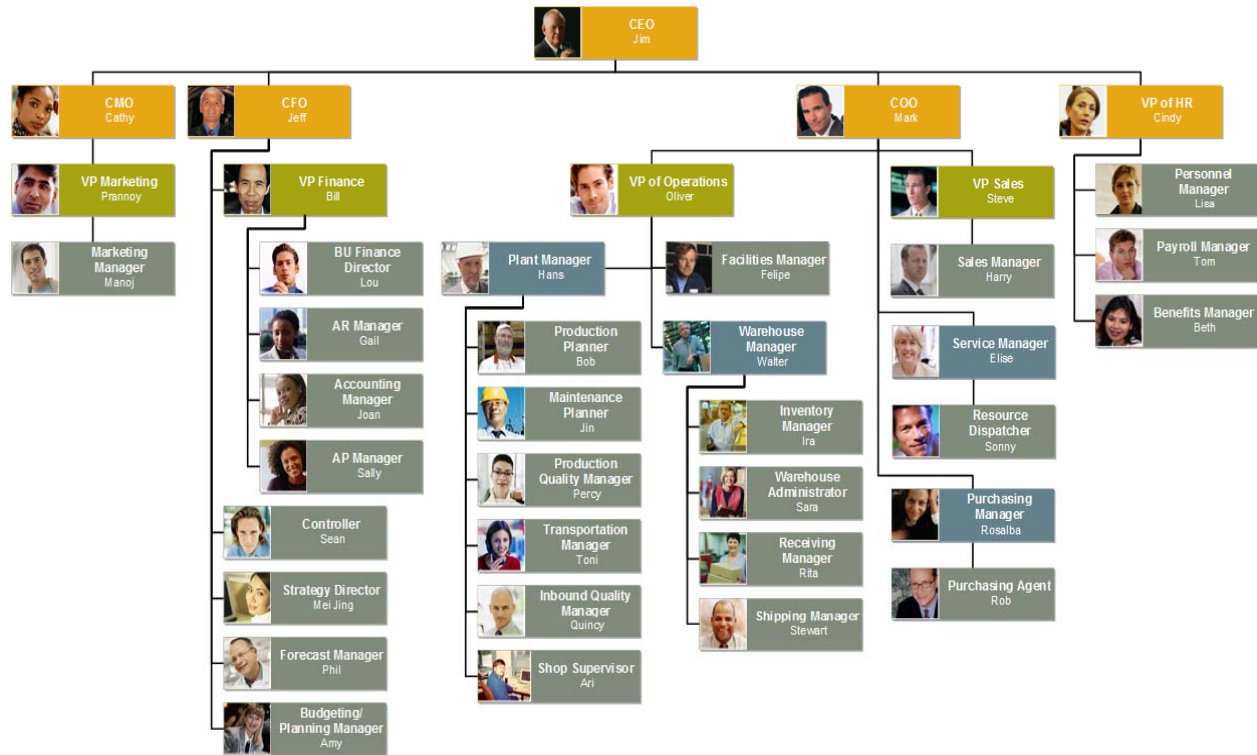
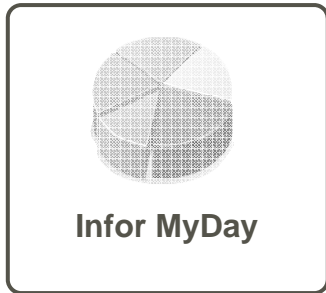
Extended Value

Technology

Business Operations

APS

MyDay



Sign Out

Terms Descriptio
Net 15 Days
Net 15 Days
4/10 Net 30
Net 15 Days
Net 15 Days
Net 15 Days
Net 15 Days

Ad-hoc Customer Order Analysis

- Currency [All Currency](#)
- Due Date [All Due Date](#)
- Item [All Item](#)
- Order Date [All Order Date](#)

drag and drop dimensions to change view

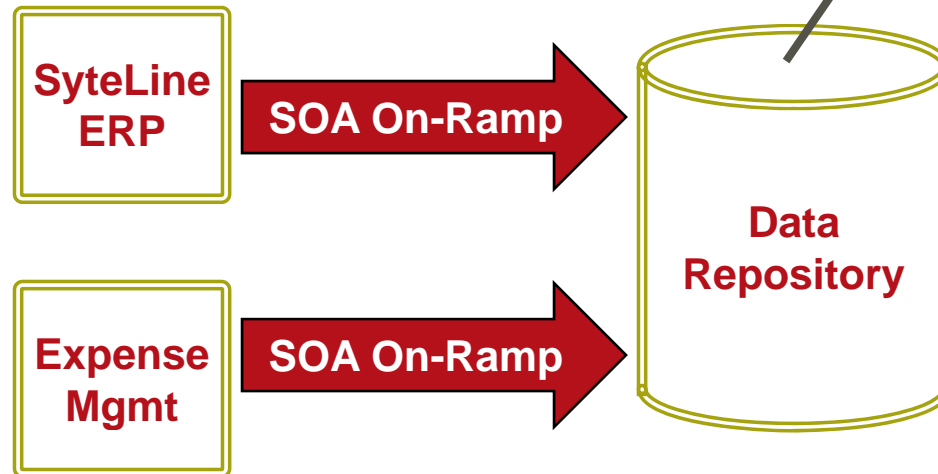
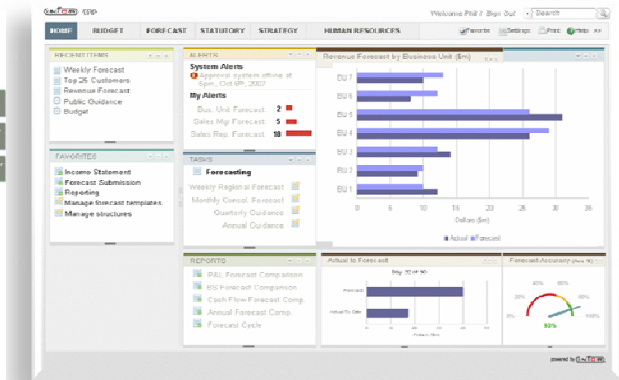
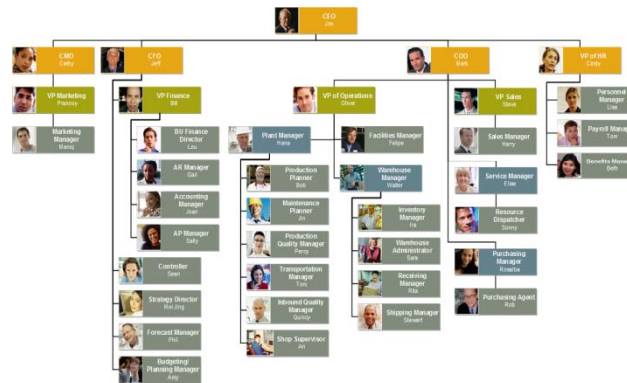
Measures

	Quantity Ordered	Quantity Fulfilled	Price Prime	Ordered Value Prime	Ordered Value Base	Line Cancelled	Line Complete
All Customers	214,406,386	8,481,536	49,197	20,314,081,384	20,312,619,657	0	3,524

Detailed Customer Order Analysis



Infor ERP MyDay Architecture



- Roles Available in ERP SL with this initial release include:

Purchasing Manager

Purchasing Agent

Accounts Payable Manager

ERP VP of Sales

Sales Manager

Accounts Receivable Manager

ERP Warehouse Manager

Warehouse Administrator

VP of Finance

ERP Controller

Accounting Manager

VP of Operations

ERP Inventory Manager

Plant Manager

Production Planner

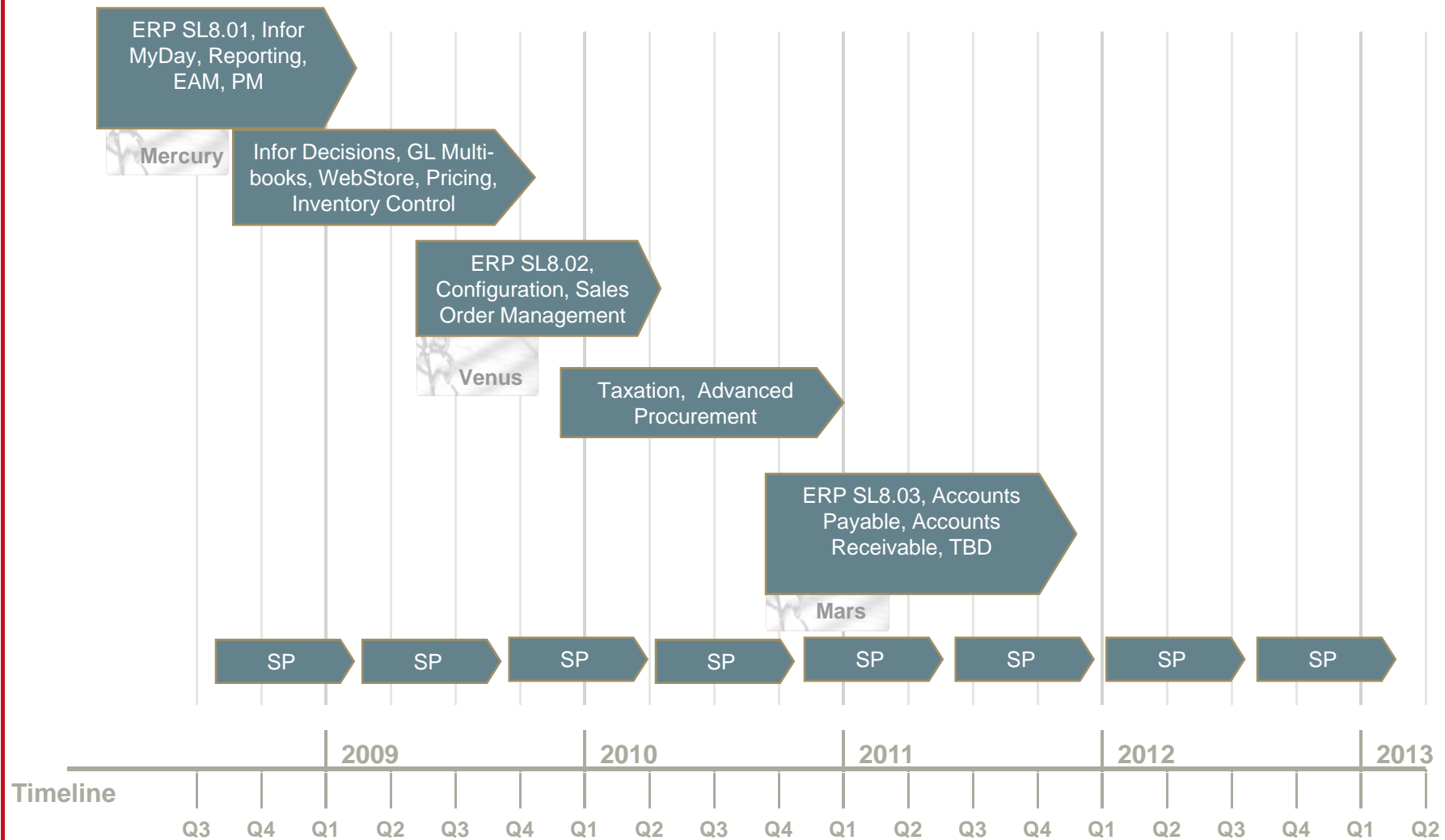
Shop Supervisor

Building ERP Syteline for the Future

- Enable ERP SyteLine for Evolve
- Project Timelines
- GL Multibooks
- WebStore, Pricing, Inventory Control
- ERP SyteLine 8.02



ERP SL Project Timelines





- A ledger to support ERP dynamic reporting requirements
- Allows the same set of ledger transactions in ERP to be seen differently by
 - Multiple calendars
 - Multiple charts of account
 - Multiple currencies
- Also supports ERP adjustments specific to one GAAP, without affecting other GAAPs
- ERP Can be easily remodelled or extended as circumstances change
- Increased Analysis Dimensions



WebStore of ERP SL

- ERP Order Management functions targeting across multiple models
- ERP Provide framework for portal based applications – WebStore
- ERP Integration with **IC and Pricing** components to allow for closed looped system.
- ERP Allow for disparate order processing across enterprise/entities
- Covers estimate and return management
- ERP Catalogue Orders
- B2B, B2C
- Credit Card Processing



Pricing of ERP SL

- ERP Achieve sales & marketing objectives
 - Increase sales & maximize profit
 - Increase or retain market share
 - Stabilization of margin
- ERP Eliminate or reduce pricing errors
- An efficient process for maintaining existing pricing and defining new pricing
- ERP Understand customer profitability and cost to serve customers



Inventory Control of ERP SL

- Projected on hand inventory
- ERP Time-sequenced inventory position
- Available-to-promise inventory inquiries/reservations.
- ERP Recommended shipments.
- Priority orders.
 - "Fair share" open orders across available inventory.
 - ERP "Impact latest orders" with inventory shortfall.
 - "impact minimum number of orders" with inventory shortfall.



- Building for the Future - Infor ERP SyteLine 8.02.00 (Feature pack)
 - Technology Enhancements
 - SQL 2008
 - ERP Business Process Enhancements
 - Navigation Forms
 - APS
 - ERP Customer Enhancements
 - Revision Control
 - Project Control
 - Enable ERP SyteLine for Evolve
 - Advanced Procurement
 - Configuration

Infor ERP SyteLine



Questions?



Infor ERP SL Reference Program

Infor ERP Ambassador Reference Program – a rewarding Way to Win for Infor Customers



■ ERP Program Benefits:

- Reward points for reference activities
- ERP Networking, relationship building and sharing of best practices
- ERP Free publicity and enhance market exposure
- Increase visibility within Infor
- Recognition as an industry/thought leader

www.infor.com/crp



Infor ERP SyteLine



Thank You !!